




WELCOME

**General Rules of Safety,
Environmental and
Contingency Measures**

When entering the Terminal you must respect all legal requirements as well as the established protocols and plans.





Mandatory use of personal protective equipment



Mandatory use of safety belt



Smoking is forbidden outside of the authorized areas



Alcoholmetry control



Forbidden the transportation of people on machinery, equipment, box of vehicles, etc.



Mandatory use of dipped headlights



Cell phone use restricted / Cell phone use prohibited during operative works



It is forbidden to take photographs without prior authorization from ONTUR's Terminal, and its publication in any medium (social networks and other).



It is forbidden to realize welding works without authorization.



Metal detector on premises.



Walk on pedestrian pathways



Mandatory use of lifejackets on ships without handrails



Do not walk under suspended cargoes



It is mandatory use to height safety harness



Headphones use restricted / Headphones use prohibited during operative works



Truck drivers: during operative works, the driver can only descend from the vehicle to indicate the cargo position



Parking in designated places



Forbidden the disposal of contaminant materials in the port Terminal



Entrance controls may be applied to personnel, vehicles and packages



It is forbidden to storage fuels



It is forbidden to realize maintenance works without authorization.



Respect the speed limits



Maximum payload permitted on national routes



It is forbidden to perform entertainment activities inside the port Terminal



Only dry cleaning must be allowed inside the port Terminal



Trucks must cover the merchandise during enter and exit



Do not walk without a lifejacket inside the areas delimited by the piers border and the yellow line limit



Follow waste classification procedures



It is forbidden to enter or feed animals inside the port Terminal



Respect SAFE AREA limits in operations.




Operations should only be carried out by well-trained personnel and under permanent supervision by trained personnel, including periodic visits from the Prevention Technician



Respect the restricted area and allow access only to personnel involved in the work, not being able to develop others activities.

If a breach is detected, the company will warn the offender. ONTUR will evaluate the severity of the incident and apply economic and restrictive sanctions as its only criteria.









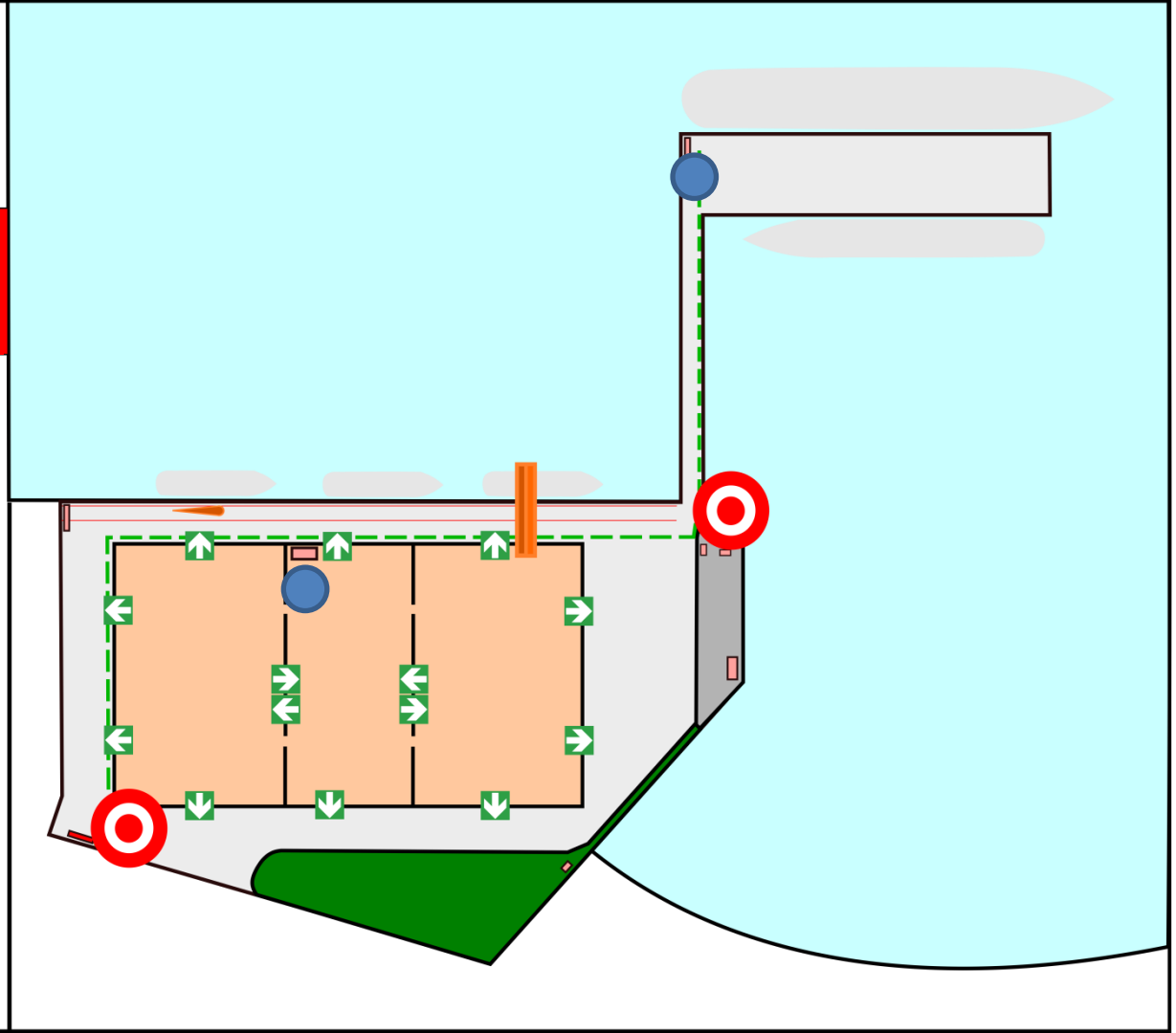
Meeting Point

In case of emergency wait at your superior or terminal's personnel here.

Remember:

- Keep clam
- Do not obstruct the exit routes

-  Meeting Point
-  Emergency Exit
-  Pathway
-  SCBA location and defibrillator



IN EMERGENCY CASE

Keep calm and do not run

Activate the fire alarm or inform to the guard

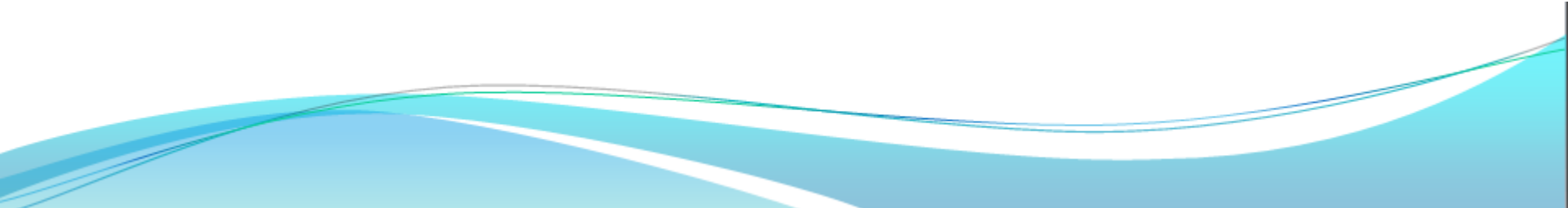
Go to any of the meeting points

Facilitate the access of the emergency services

If necessary, use the SCBA and defibrillator
equipment are in the Terminal



ONTUR THANKS FOR MAKING OUR
TERMINAL A PLACE CLEAN AND SAFE.



**THANKS FOR YOUR
TIME!!!**

